



## Vow renewals at Edenwood Place



15 Old Chatham Road, Blue Bell Hill, Chatham, ME20 7EZ

Tel: 01622 960 140

Email: [info@edenwoodplace.co.uk](mailto:info@edenwoodplace.co.uk)

Web: [www.edenwoodplace.co.uk](http://www.edenwoodplace.co.uk)



Edenwood Place:  
a stunning wedding venue  
with far reaching views  
across the Weald of Kent.

With breath-taking views over the North Downs, a range of spacious, elegant rooms with a modern botanical-meets-industrial theme and an on-site coordinator, this is the perfect place to hold your special day



We go above and beyond to ensure that your wedding is everything that you imagined.

Planning can be a daunting task and so we are on hand to make the experience as enjoyable as possible.

Edenwood Place offers a wedding that is truly out of the ordinary.





## The Venue

### Our Story

Offering an alternative way to do things.

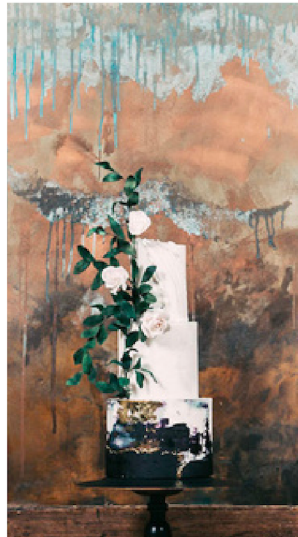
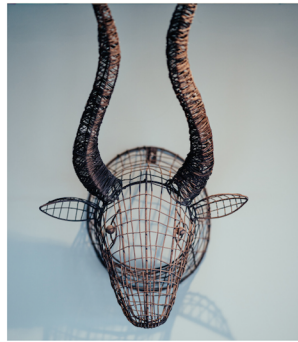
Opening during lockdown was just the beginning of a wild and crazy journey for us.

The inspiration for Edenwood Place came when we realised what Kent was missing – a beautiful yet unique space perfect for couples who want their day to stand out.

With a scientific background, our designer was key in shaping the stunning industrial-meets-botanical vibe of the venue; with rusted statement paint sitting alongside wild foliage walls stacked with champagne glasses and gorgeous terraces with panoramic views of the countryside.

Edenwood Place offers exclusive venue hire for vow renewals. This space will give you a day as unique as your love story.

Tours of Edenwood Place can be arranged by prior appointment.



Whatever your vision, Edenwood Place has a space to compliment. We offer a range of beautiful rooms, all available as part of our exclusive venue hire.







‘The inspiration for our venue was industrial meets botanical. We wanted to bring the outside in and create a biophilic interior with a fresh and unique feel, designing something totally different to anything else that we currently have in Kent.

Our venue features foliage hanging from the ceiling and walls throughout, creating a perfect contrast to the stunning décor. Handmade lighting and rust-scape walls offset natural touches and mesmerising views. Our furniture is all handmade using reclaimed wood and reused pieces such as our velvet seats, salvaged from a 1950s cinema in Southend; giving them a new lease of life.

We have incorporated unique artworks combined with elements such as our metal and aged-glass planters. Stained wood and rustic colours are complemented by beautiful natural light and sweeping vistas of the Kent countryside.

Edenwood Place truly is a trend-setting venue where memories can be made.’





## OUR VENUE

Whatever your vision, Edenwood Place has a space to compliment. We offer a range of beautiful areas, including terrace and patios.

Accommodating for up to 75 day guests for ceremony and sit-down, and up to 250 capacity for evening guests.



### *The Orangerie*

This light and airy space allows you to enjoy the beautiful views across the North Downs, whatever the weather.

Vintage and industrial pieces sit amongst lush foliage and miniature orange trees. This area is suitable for drinks and canapés for 30 guests or intimate seating for around 20 guests.

### *The Viewpoint Terrace*

Featuring a summer house, a tiki bar area and fire pits, alongside stunning panoramic views from three interlinked terraces.

This extraordinary space lends itself to partying under the stars for over 100 guests - or simply a place to relax and unwind.

### *The Main Space*

Our main space has an industrial theme, with statement walls showcasing a beautiful rusted effect.

A spacious area with dark wood floors, this room is perfect for dancing and can accommodate a band. An adjoining marquee doubles the capacity for a sit down for up to 75 day guests.

### *The Terrace Room*

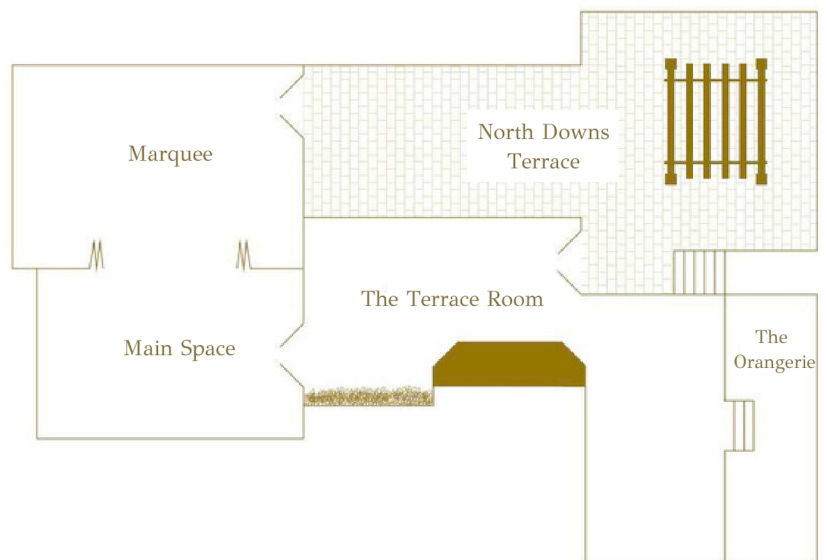
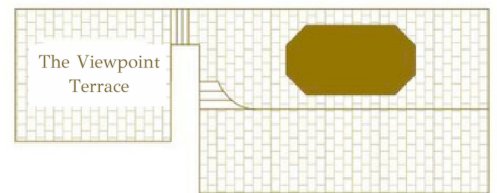
Our beautiful bar area is perfect for hosting a party. Featuring blue and white panelling, sea green paint and a foliage feature wall covered with prosecco glass holders.

The room alone can comfortably accommodate over 100 standing guests and also has some of the best views from inside the venue.

### *North Downs Terrace*

Available for outdoor events, the North Downs Terrace's gorgeous view speaks for itself.

The outdoor patio boasts olive trees and plants; an idyllic location for enjoying cocktails or a BBQ and watching the sun go down behind the pergola.







It's in the details

We have everything you could need.  
Our comprehensive packages  
provide everything you need for your  
vow renewal.

With a prosecco wall, candy cart, pergola,  
flowers; Edenwood place is ready to go –  
all you need to do is to turn up.  
Alternatively, if you would like to design  
your own day, our on-site events team are  
on hand to arrange any additional extras.

A dedicated team of staff  
on hand to make your day.

We are a family-run business and  
understand the importance of an event  
with loved ones.

Our dedicated team of staff are here to  
deliver the day that you deserve in a truly  
personalised way.



Your choice,  
Al fresco or intimate and private.  
Edenwood Place boasts both indoor and  
outdoor ceremony areas.

You can choose to renew your vows in our  
striking ceremony room, or  
in front of amazing vistas of  
the Kent countryside on our North Downs  
terrace.

There are stunning settings to make your day  
unique and tailored to your vision.

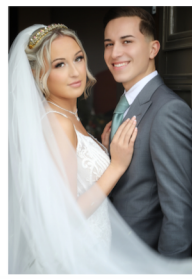


Hold a

# Full Day Vow Renewal

here with us

This option grants you exclusive use of the venue event space for your entire vow renewal celebration, allowing you to customize every aspect of your special day, from ceremony to reception, according to your preferences.



## FULL DAY (INCLUDING CEREMONY) DRY HIRE

Monday, Tuesday & Wednesday

2024

2025

2026

January, February, March & November

£2,700

£2,900

£3,100

April & October

£3,200

£3,400

£3,600

May - September & December

£3,700

£3,900

£4,100

Thursday, Friday & Sunday

2024

2025

2026

January, February, March & November

£3,500

£3,700

£3,900

April & October

£4,000

£4,200

£4,400

May - September & December

£4,500

£4,700

£4,900

Saturday

2024

2025

2026

January, February, March & November

£4,300

£4,500

£4,700

April & October

£4,800

£5,000

£5,200

May - September & December

£5,300

£5,500

£5,700

Prices are inclusive of VAT and do not include the fees paid to the registrar office or celebrant to conduct your ceremony.

Prices are subject to change. Terms & conditions apply



Hold your

# Twilight Vow Renewal

here with us

This option caters to couples who desire a romantic evening celebration. Twilight vow renewals allow access to the venue during the late afternoon and evening hours, creating a magical ambiance for your ceremony and reception as the sun sets and the stars emerge.



## TWILIGHT VOW RENEWAL (INCLUDING CEREMONY) DRY HIRE

Monday, Tuesday & Wednesday	2024	2025	2026
January, February, March & November	£2,200	£2,400	£2,600
April & October	£2,700	£2,900	£3,100
May - September & December	£3,200	£3,400	£3,600
Thursday, Friday & Sunday	2024	2025	2026
January, February, March & November	£3,000	£3,200	£3,400
April & October	£3,500	£3,700	£3,900
May - September & December	£4,000	£4,200	£4,400
Saturday	2024	2025	2026
January, February, March & November	£3,800	£4,000	£4,200
April & October	£4,300	£4,500	£4,700
May - September & December	£4,800	£5,000	£5,200

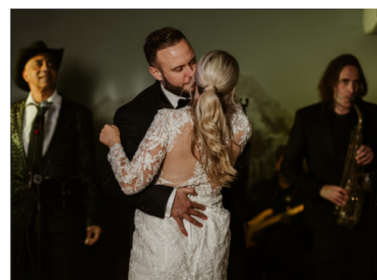
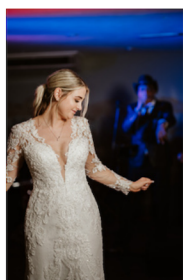
Prices are inclusive of VAT and do not include the fees paid to the registrar office or celebrant to conduct your ceremony.

Prices are subject to change. Terms & conditions apply



# Next steps. . .

After finalizing your selected package, there are several supplementary options available to truly tailor your vision from catering, venue styling and entertainment for you and your guests.



## ADDITIONAL EXTRAS

### VENUE EXTRAS

We offer a range of additional extras to elevate your event, including drinks packages, linen hire, sweet carts, post boxes, a Prosecco and doughnut wall, and more, to enhance your experience.

### CATERING

We have a list of hand-picked trusted partners for you to choose from, working with you to develop the perfect dining plan, whether that is a three-course meal or something a little more casual. Our team will assist you in selecting the perfect catering partner to help bring together all aspects of the day.

### RECOMMENDED SUPPLIERS

We have worked with some fabulous businesses to help create the perfect events. So, if you are looking for a band, DJ, photographer, venue stylist, or anything else... please ask, as we are more than happy to assist you making your vision a reality. Our trusted network of suppliers have all previously worked with the venue so know the layout and team well.

## BOOK A VIEWING

If you would like to view the venue or to discuss your event in more detail, book your viewing appointment using the QR link below:



Or email our Events Team directly at [info@edenwoodplace.co.uk](mailto:info@edenwoodplace.co.uk)



Venue hire and additional extras that are provided by the venue, will be invoiced directly from Edenwood Events Ltd. Catering and recommended suppliers will invoice you independently, with their own terms and conditions.

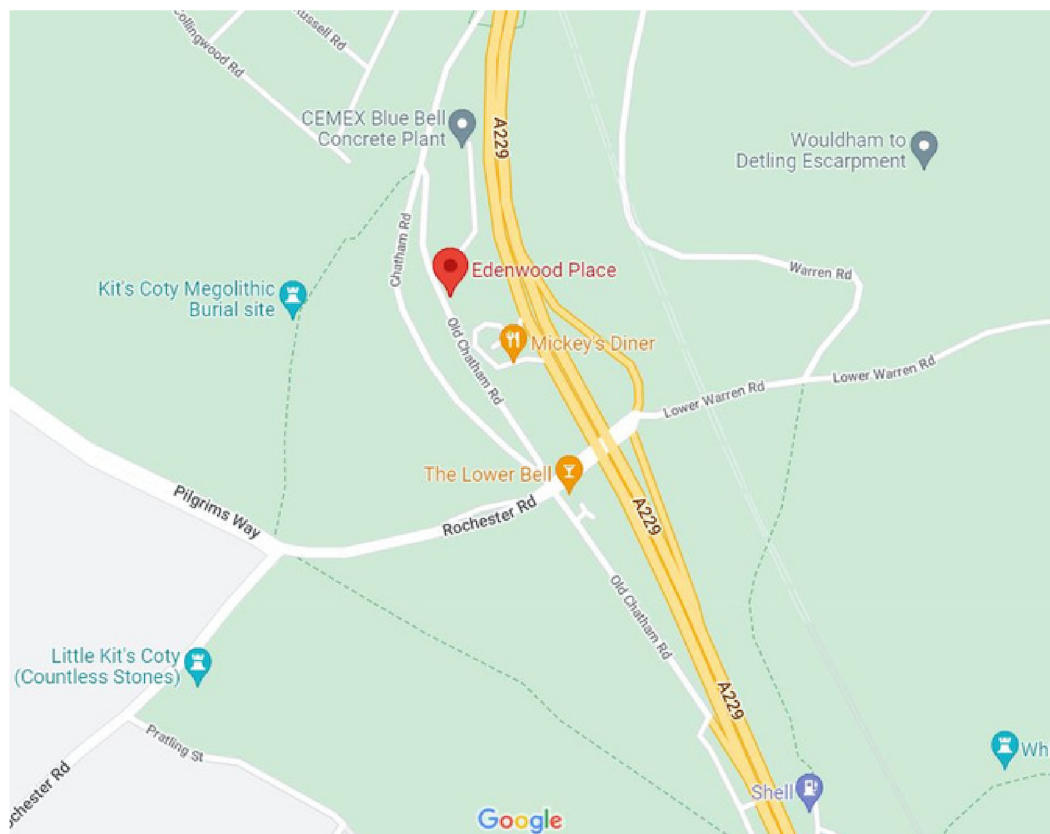
Please note that we only allow suppliers from our recommended suppliers list. Contact [info@edenwoodplace.co.uk](mailto:info@edenwoodplace.co.uk) for more information.



## DIRECTIONS FOR YOUR GUESTS:

Address for Sat Nav:

Edenwood Place, 15 Old Chatham Road, Aylesford Kent ME20 7EZ



What Three Words:

///photo.belong.promising

You can also search for Edenwood Place on TikTok for video directions to our premises

Directions from South (from Maidstone) of A229:

- Follow A229
- Take the exit toward Sandling/Eccles/Burham/Wouldham ( 341 ft)
- Go past the Lower Bell Inn across the crossroads
- Turn right onto Old Chatham Road (slightly hidden road)
- Destination will be on the right (0.4 miles)

Directions from North (from Medway) of A229:

- Follow A229
- Take the exit toward Eccles/Burham/Wouldham (0.2 miles)
- Continue onto Rochester Road (436 ft)
- Turn right onto Old Chatham Road (slightly hidden road)
- Destination will be on the right (0.2 miles)

### Parking

Edenwood Place has 48 free car parking spaces available opposite the venue. There is parking along the road, however, this is through-access for the other vehicles, so we ask that people be aware of this.

Guests attending an event can leave their vehicles overnight should they wish, but these should be collected no later than 11am the following day to avoid a parking ticket.

Vehicles and belongings are left at the owners own risk.

For further insight, you can visit us at the following social media channels:

